

MONTHLY MEMBERSHIP PROGRESS REPORT

LOCATION PENNSYLVANIA

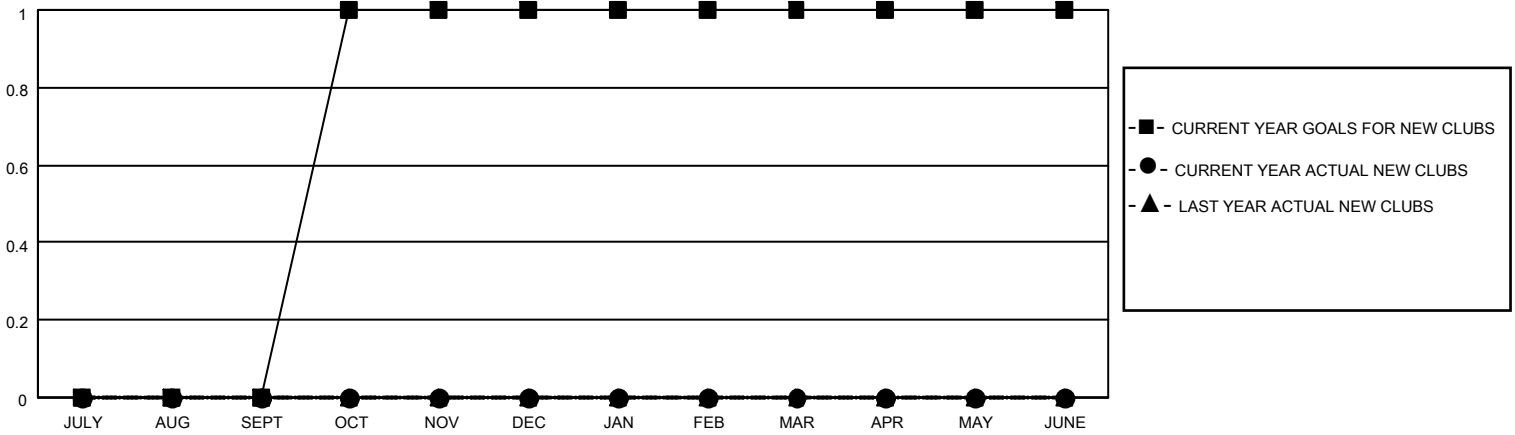
District 14 J

Results as of: 6/30/2022

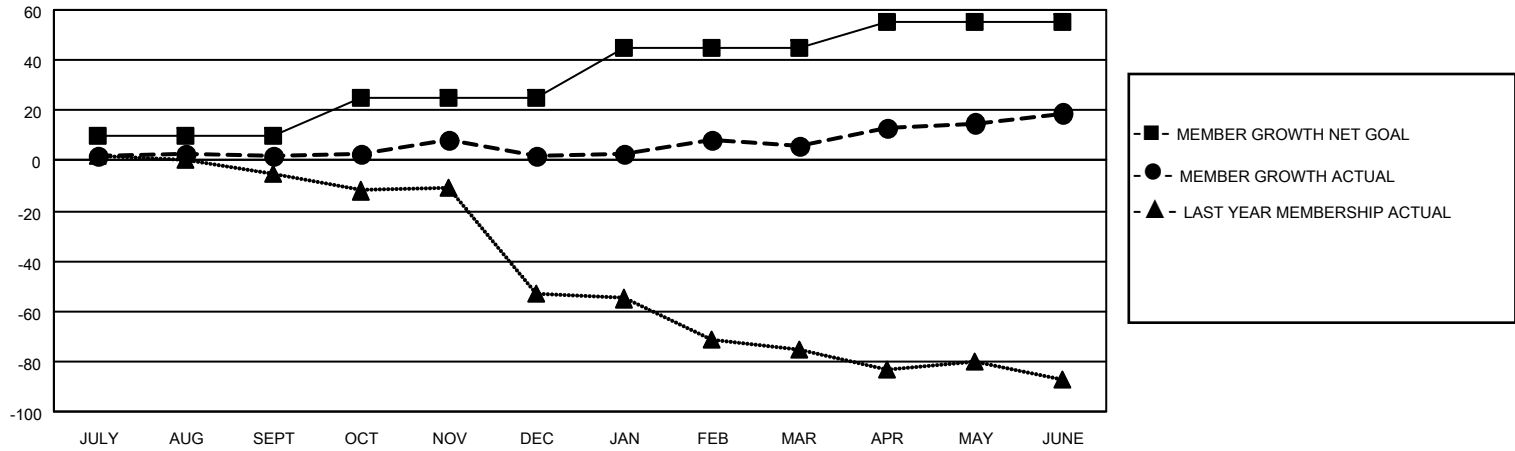
Clubs			
RESULTS FOR 2021-2022			
QUARTER	NEW CLUB GOAL	NEW CLUBS	DROPPED CLUBS
JULY/AUG/SEPT	0	0	0
OCT/NOV/DEC	1	0	0
JAN/FEB/MAR	0	0	0
APR/MAY/JUNE	0	0	0

Members			
RESULTS FOR 2021-2022			
QUARTER	MEMBER GROWTH NET GOAL	MEMBER GROWTH ACTUAL	DROPPED MEMBERS ACTUAL (including transfers)
JULY/AUG/SEPT	10	25	8
OCT/NOV/DEC	15	16	15
JAN/FEB/MAR	20	18	11
APR/MAY/JUNE	10	18	5

GOALS AND ACTUAL NEW CLUBS CUMULATIVE



GOALS AND ACTUAL MEMBERS CUMULATIVE



DROPPED CLUBS: 0	
DROPPED MEMBERS	
DECEASED	16
CLUB CANCELLED	0
OTHER	23
TOTAL	39

15 CLUBS OF 27 ADDED 1 OR MORE NEW MEMBERS

[CLICK HERE FOR CUMULATIVE MEMBERSHIP DATA](#)

<u>GENDER DISTRIBUTION</u>	
MALE	504 (66.84%)
FEMALE	250 (33.16%)
NON BINARY	0 (0.00%)
PREFER NOT TO ANSWER	0 (0.00%)
<hr/>	
TOTAL FAMILY UNIT MEMBERS	219
<hr/>	
FAMILY MEMBERS PAYING HALF DUES	114